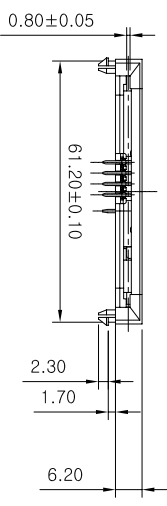
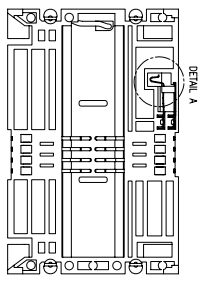
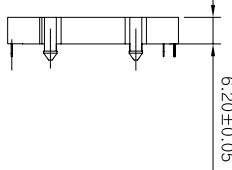
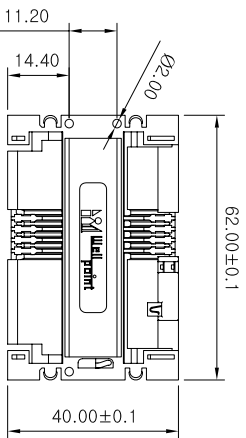
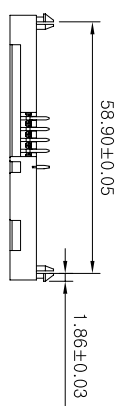
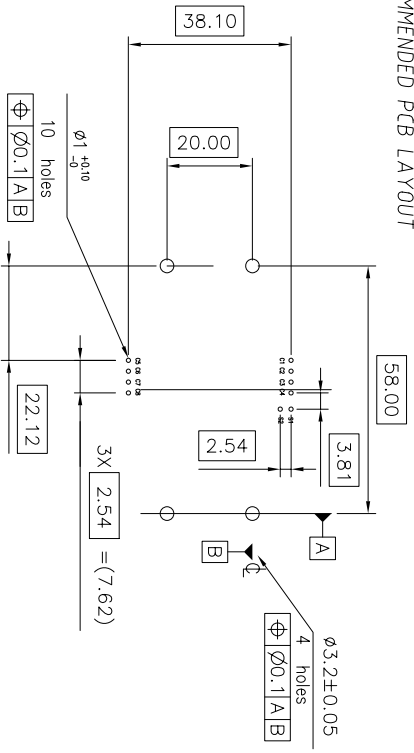


**DETAIL A**  
4:1



# RECOMMENDED PCB LAYOUT



**GENERAL.**

This 6 series connector use a "sliding" contact technology suitable for most applications It has been designed for easy mounting on the PCB.

**1. ELECTRICAL PROPERTIES.**

- Insulation resistance : 5000 M $\Omega$  min
- Dielectric withstanding Voltage : 750 Vrms
- Current carrying capacity : 10 mA min, 1A max
- Contact resistance : 100 m $\Omega$  max
- Card sensor type : Normally closed

**2. MECHANICAL PROPERTIES.**

- Card Insertion force : 5 N max
- Card Withdrawal force : 1 N min
- Durability : 10,000 cycle/min

**3. MATERIAL.**

- Housing : PBT 30% Glass Filled, Color Black, UL 94V-0
- Contacts and switch : Phosphor bronze
- Plating : Nickel plated t=3.0  $\mu$ m  
(Contact Area Gold flash t=0.05  $\mu$ m)

**4. ENVIRONMENT.**

- Operating temperature : - 20 $^{\circ}$ C /+70 $^{\circ}$ C
- Storage temperature : -40 $^{\circ}$ C /+85 $^{\circ}$ C

설계	검토	승인
H C LEE	H C LEE	C S KIM
<b>PART No.</b> <b>610100-TG</b>		
<b>DESCRIPTION</b> SMART CARD CONNECTOR		
DATE : 2009/04/23 SCALE 1 / 1		DWG NO.REV <b>WP610100-TG.A00</b>